

**The first and original
cassette system is
still the best**

**Tissue-Tek® Uni-Cassette® System
Histo-Tek® Cassette System
Tissue-Tek® Processing/Embedding
Cassette System**



continuous innovation for pathology





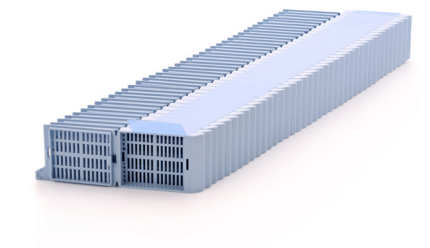
The Tissue-Tek® Uni-Cassette® System

- The Tissue-Tek Uni-Cassette System provides a secure and efficient specimen identification system, from the grossing bench to the permanent paraffin block
- Designed for maximum fluid exchange during processing
- Contains a base and attached lid, which is easily removed
- Manufactured of chemical-resistant plastic to withstand solvents and even decalcifying solutions
- Validated on the Tissue-Tek® SmartWrite® Cassette Printer and the Tissue-Tek® AutoWrite® Cassette Printer but compatible with other cassette printers
- Compatible with Tissue-Tek AutoSection® and most microtome block clamps
- Tissue-Tek Uni-Cassettes come in the following configurations:
 - 45° angle surface and 35° angle with large writing surface
 - Standard and biopsy cassettes
 - Single and stacked cassettes
 - Up to 12 colors available

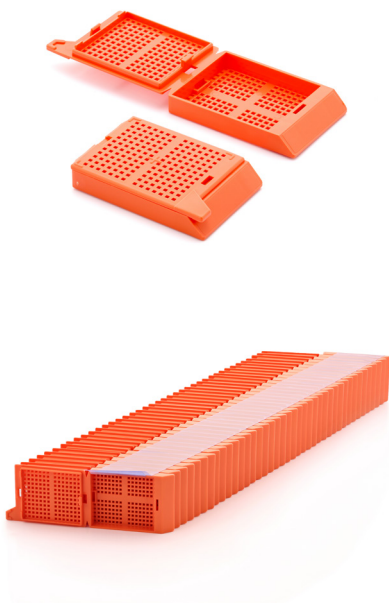


Tissue-Tek® Uni-Cassette® Standard Cassette System

- Base and lid attached standard cassette with 1mm slits for processing specimens
- 45° angle printing on labeling surface
- Smooth, single action, fracture-back hinge; fractures when being closed then breaks easily post processing
- Raised spacer nubs placed at center and corners for better exchange of processing reagents
- Optimized for Tissue-Tek SmartWrite Cassette Printer
- 12 colors (aqua, blue, gold, gray, green, lilac, orange, pink, red, tan, white, yellow)
- Packaging: 2 x 250/case; 6 x 250/case (white only)
- Stacked and taped configuration for use with Tissue-Tek SmartWrite Cassette Printer with AutoLoader and Tissue-Tek AutoWrite Cassette Printer
- Packaging: 10 x 40 (400/case)



Tissue-Tek® Uni-Cassette® Biopsy Cassette System

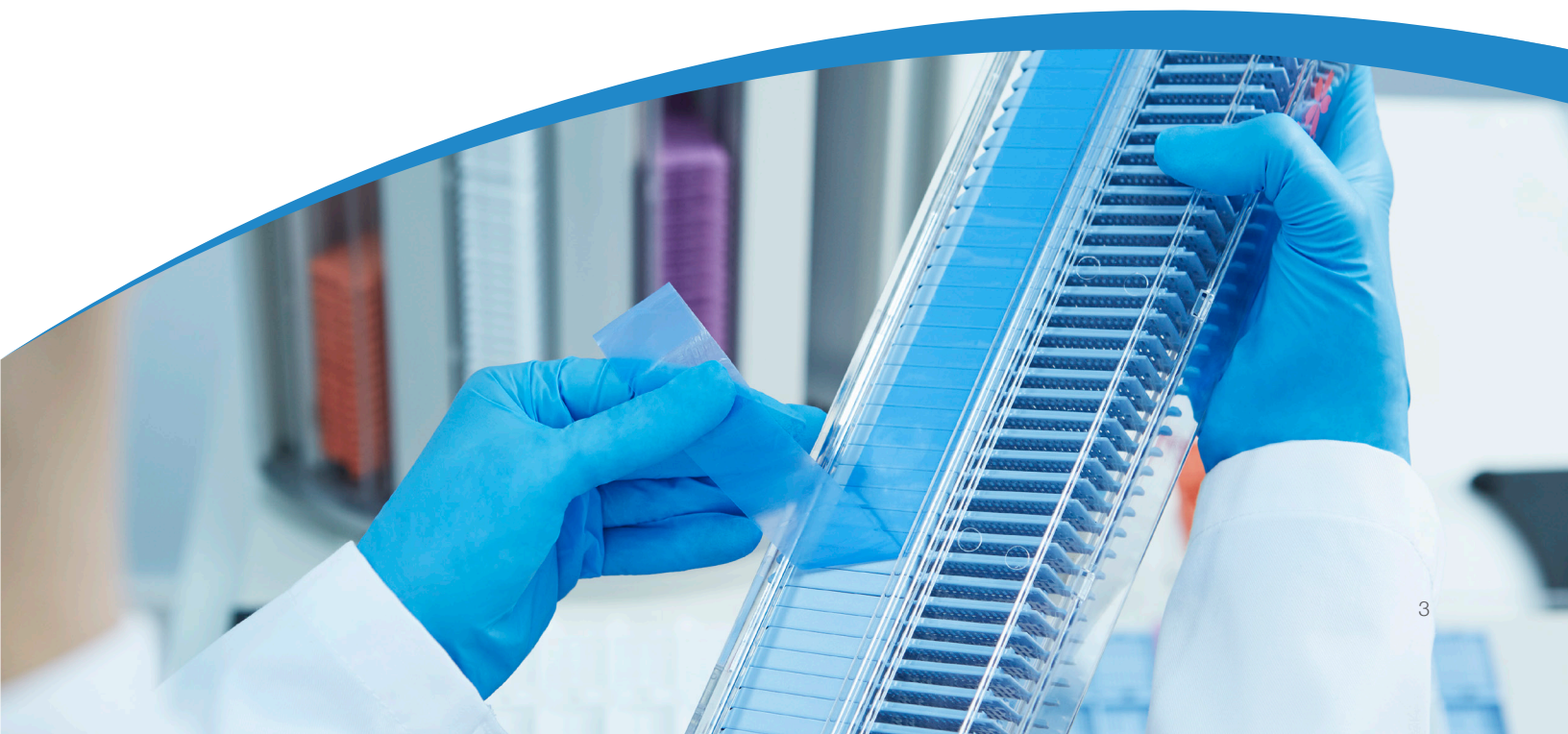


- Base and lid attached biopsy cassette with 1mm pores for processing small specimens
- 45° angle printing or labeling surface
- Smooth, single action, fracture-back hinge; fractures when being closed then breaks easily post processing
- Raised spacer nubs placed at center and corners for better exchange of processing reagents
- Optimized for Tissue-Tek SmartWrite Cassette Printer
- 7 colors (blue, gray, green, orange, red, white, yellow)
- Packaging: 2 x 250/case
- Stacked and taped configuration for use with Tissue-Tek SmartWrite Cassette Printer with AutoLoader and Tissue-Tek AutoWrite Cassette Printer
- Packaging: 10 x 40 (400/case)

Tissue-Tek® Uni-Cassette® Large Writing Surface System



- 35° angle face with large writing surface standard cassette; base and lid attached
- 12 colors (aqua, blue, gold, gray, green, lilac, orange, pink, red, tan, white, yellow)
- Only suited for hand written labeling and cannot be used with Tissue-Tek SmartWrite Cassette Printers
- Packaging: 2 x 250/case; 6 x 250/case (white only)





Histo-Tek® Cassette System

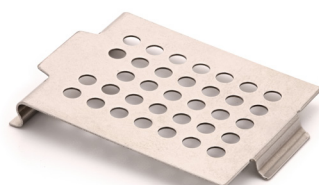
- Histo-Tek Cassettes provide an economical, secure and efficient specimen identification system from the grossing bench to the permanent paraffin block
- Standard and Biopsy cassettes with lid attached
- Histo-Tek Standard with Lid Attached, 1,000/case comes in 11 colors (aqua, blue, gold, green, lilac, orange, pink, red, tan, white, yellow) and compatible with the Tissue-Tek SmartWrite Cassette Printer
- Histo-Tek Biopsy with Lid Attached, 1,000/case comes in 7 colors (blue, gray, green, orange, red, white, yellow) and compatible with Tissue-Tek SmartWrite Cassette Printer
- Compatible with Tissue-Tek AutoSection and most microtome block clamps





Tissue-Tek® Processing/Embedding Cassette System

- The coverless Tissue-Tek Processing/Embedding Cassettes are cassette bases without lids designed to be used with the reusable metal lids or as a support structure for the paraffin block
- Available in 11 colors (aqua, blue, gold, green, lilac, orange, pink, red, tan, white, yellow)
- Stacked configuration for use with Tissue-Tek AutoWrite Cassette Printer; 10 x 40 (400/case)
- The metal Tissue-Tek Processing/Embedding Cassette Cover; 25/case (product code 4194) has to be purchased separately
- Compatible with Tissue-Tek AutoSection and most microtome block clamps



Tissue-Tek® Processing/Embedding Cassette Cover; 25/case (product code 4194)
(are available for purchase separately)



Tissue-Tek® Mega-Cassette™ System

- The Tissue-Tek Mega-Cassette System (size 40 x 25 x 10 mm) is designed to provide specimen identification and security, from the grossing bench to the permanent paraffin block
- Suitable for larger tissue samples
- When utilized with Tissue-Tek Mega-Cassette Base Mold; 6/case (product code 4166), the cassette becomes the supporting structure of the paraffin block during embedding
- Not compatible with Tissue-Tek AutoSection



Tissue-Tek® Mega-Cassette™ Base Mold; 6/case (product code 4166)
(are available for purchase separately)

Specifications

Tissue-Tek® Uni-Cassette® Cassette System

	Standard	Standard Stacked	Biopsy	Biopsy Stacked	Large Writing Surface
Unit of measure	Colors 500/case; White 1,500/case	10 x 40/case	500/case	10 x 40/case	Colors 500/case; White 1,500/case
Number of colors	12	12	7	7	12
Aqua	•	•			•
Blue	•	•	•	•	•
Gold	•	•			•
Gray	•	•	•	•	•
Green	•	•	•	•	•
Lilac	•	•			•
Orange	•	•	•	•	•
Pink	•	•			•
Red	•	•	•	•	•
Tan	•	•	•	•	•
White	•	•			•
Yellow	•	•	•	•	•
35°					•
45°	•	•	•	•	
Tissue-Tek SmartWrite Cassette Printer	Yes	Yes	Yes	Yes	No
Tissue-Tek SmartWrite Cassette Printer with AutoLoader	Yes	Yes	Yes	Yes	No
Tissue-Tek AutoWrite Cassette Printer	Yes	Yes	Yes	Yes	No

Tissue-Tek® Cassette System**Histo-Tek® Cassette System**

	Processing and Embedding	Processing and Embedding Stacked	Mega Cassette	Standard Lid Attached	Biopsy Lid Attached
Unit of measure	1,500/case	10 x 40/case	750/case	1,000/case	1,000/case
Number of colors	12	1	1	11	7
Aqua	•	•		•	
Blue	•	•		•	•
Gold	•	•		•	
Gray	•	•			•
Green	•	•		•	•
Lilac	•	•		•	
Orange	•	•		•	•
Pink	•	•		•	
Red	•			•	•
Tan	•	•		•	
White	•	•	•	•	•
Yellow	•	•		•	•
35°					
45°	•	•	•	•	•
Tissue-Tek SmartWrite Cassette Printer	No	No	No	Yes	Yes
Tissue-Tek SmartWrite Cassette Printer with AutoLoader	No	No	No	Yes	Yes
Tissue-Tek AutoWrite Cassette Printer	Yes	Yes	Yes	Yes	Yes



A long tradition of excellence

Known for best-in-class automation and reliability Sakura Finetek remains a privately-held company in business since 1871. Sakura Finetek has achieved its success and solidified its reputation by providing timely, ingenious solutions to the real challenges laboratories face on a day-to-day basis.

Our rich history has given us a thorough understanding of technology, quality, reliability, value for money and our customers' requirements. We use this knowledge to passionately develop products that anticipate developments in both technology and market needs.

Sakura Finetek USA, Inc. (SFA) is based in Torrance, California. Functions covered at this facility include sales and marketing, service and technical support, R&D, and manufacturing. SFA is an ISO 13485 certified manufacturer and supplier. As one of the two global manufacturing and R&D sites, SFA develops instruments and reagents into system solutions and secures our innovation with a steady stream of patents.

In addition to supporting the U.S. marketplace, SFA is also responsible for Canada, Mexico, Central and South America and serves these markets with

a network of local distributors.

With the worldwide headquarters in Japan and regional offices in Japan, The Netherlands and the U.S.A., the global strategy of worldwide representation has been fulfilled to guarantee our customers the best service and support.

Our organization is developing, professionalizing and growing continuously, and thus maintaining its position as a trustworthy and valuable partner in histopathology.

Please visit our website www.sakuraus.com

Sakura Finetek USA, Inc., 1750 West 214th Street
Torrance, CA 90501 U.S.A.

