



continuous innovation for pathology

Sakura Finetek USA Press Release

June 6, 2022

Sakura Finetek USA launches a new webpage for the Tissue-Tek Genie® brand of Advanced Staining reagents.

Contact: Erico von Bueren, Senior Director of Marketing and Strategy

TORRANCE, CA – Sakura Finetek USA, Inc. today announced the launch of a new Tissue-Tek Genie webpage for advanced staining reagents.

Sakura Finetek offers high quality primary antibodies and probes specifically developed to provide high sensitivity and specificity when used with the Tissue-Tek Genie® Advanced Staining System. This ensures that users are provided with consistent, quality staining results and reproducibility that clinical laboratories have come to expect from Sakura Finetek IHC & ISH advanced staining products. These staining results were independently evaluated by a leading quality assurance organization to maximize diagnostic utility and provide optimal stain quality.

“The new webpage gives our customers fast and easy access to relevant information about quality antibodies, detection systems and ancillary reagents run on the Tissue-Tek Genie® Advanced Staining System that improve the accuracy of diagnostic results to benefit the health of all patients” stated William Jennings, Senior Product Manager of Advanced Staining, and continues:” The new webpage demonstrates the staining results on multiple tissue types with different antigen expression levels enabling pathologists to review them utilizing their quality assessment criteria.”

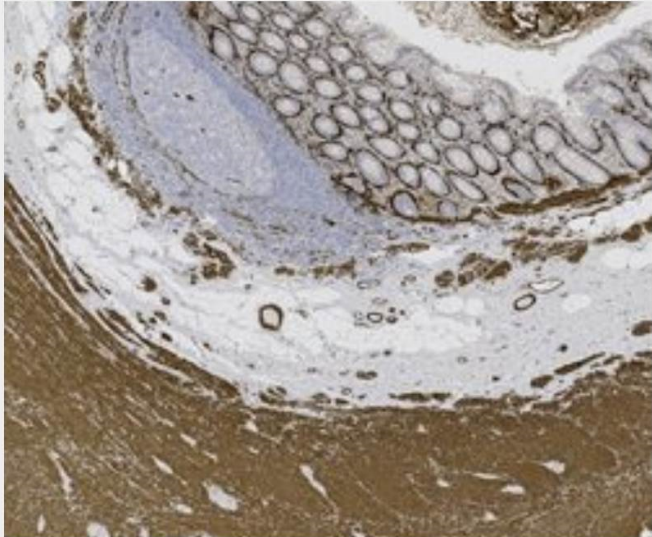
The webpage lists all antibodies in the Tissue-Tek Genie® Advanced Staining System portfolio with a search function that makes finding the desired antibody fast and easy.

Sakura Finetek USA, Inc.
1750 W 214th Street
Torrance, CA 90501
U.S.A.

Tel. +1 310 972 7800
Fax. +1 310 972 7888

www.sakuraus.com

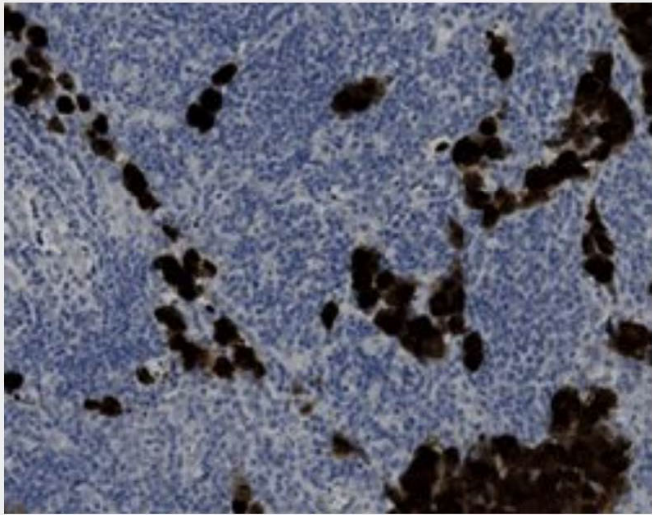
Search:



Tissue-Tek Genie® anti-Actin, Smooth Muscle

Clone: 1A4
Host clonality: mouse monoclonal
Control tissue: stomach, small Intestine, colon, appendix, myogenic tumors with know alpha actin expression
Staining pattern: cytoplasmic
Regulatory status: IVD, FDA Class I
Product code: 8292-C010: RTU, 10 capsules; 1 pack
 8292-M250: RTU, 250 tests, 1 cartridge; 1 unit

[more details](#)



Tissue-Tek Genie® anti-ALK (Heme)

Clone: 1A4
Host clonality: mouse monoclonal
Control tissue: appendix, ALK positive ALCL
Staining pattern: cytoplasmic and/or nuclear staining
Regulatory status: IVD, FDA Class I
Product code: 8350-C010: RTU, 10 capsules; 1 pack
 8350-M250: RTU, 250 tests, 1 cartridge; 1 unit

[more details](#)



Tissue-Tek Genie® anti-AMACR

Clicking on “more details” for a selected antibody leads to a webpage dedicated to that antibody; here you will find multiple images of stained tissues used to demonstrate the high sensitivity and specificity of that specific assay, each enriched with a comment describing the staining pattern of cells for that specific normal or e.g., cancer tissue.

Tissue-Tek Genie® anti-PMS2

Clone: EP51

Host clonality: rabbit monoclonal

Control tissue: normal colon, appendix, tonsil

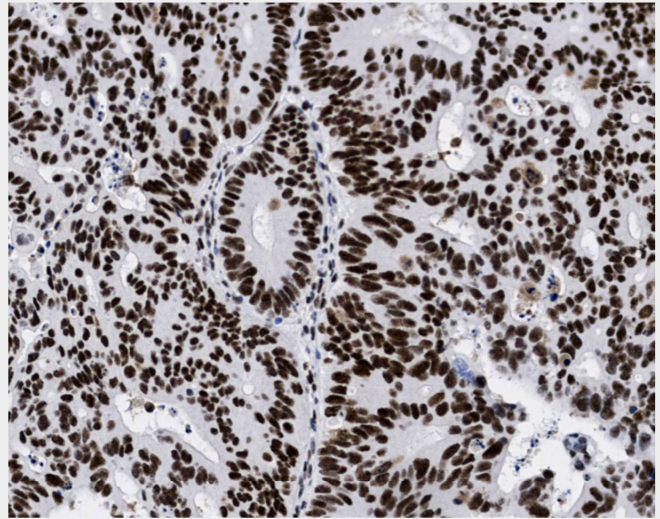
Staining pattern: nuclear

Regulatory status: IVD, FDA Class I

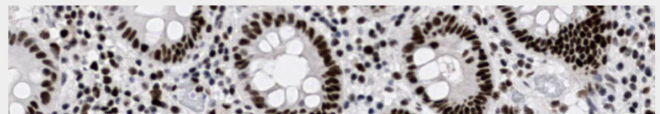
Product code: 8328-C010: RTU, 10 capsules; 1 pack

8328-M250: RTU, 1 cartridge, 250 tests; 1 unit

PMS2 is expressed in normal proliferating cells and, when heterodimerized with MLH1 (MutL protein homolog 1), is involved in repairing DNA mutations which may occur during DNA replication. Lost expression or low levels of PMS2 are associated with colorectal and other cancers.



Strong staining in colon adenocarcinoma.



About Tissue-Tek Genie Advanced Staining System

The Tissue-Tek Genie® Advanced Staining System is the first and only fully automated, true random access stainer for immunohistochemistry (IHC) and in situ hybridization (ISH) that features 30 completely independent staining stations. This IHC & ISH stainer system provides uncompromised fast and predictable turnaround time (TAT) for unprecedented staining quality of the entire antibody and probe portfolio, and removes the need to sort or batch slides: just load any slide, any biomarker, any station, any instrument, any time.

About Sakura Finetek USA, Inc.

With its U.S. office based in Torrance, California, Sakura Finetek is the global leader in advancing cancer diagnostics by providing integrated solutions for anatomic pathology and patient treatment through best-in-class innovation, quality and customer care. With a strategic



continuous innovation for pathology

focus on end-to-end automation, Sakura Finetek continues to lead the industry in the development and commercialization of automated histopathology instrumentation and consumables for anatomic pathology.

Sakura Finetek systems dramatically increase efficiency, standardize results, and enable pathology laboratories to more simply manage their daily workload while significantly impacting patient care. Visit www.sakuraus.com to learn more.

Erico von Bueren
Senior Director of Marketing and Strategy
Sakura Finetek USA, Inc.
1750 W. 214th St.
Torrance, CA 90501
U.S.A.
evonbueren@sakuraus.com

MPRE0074 Rev A